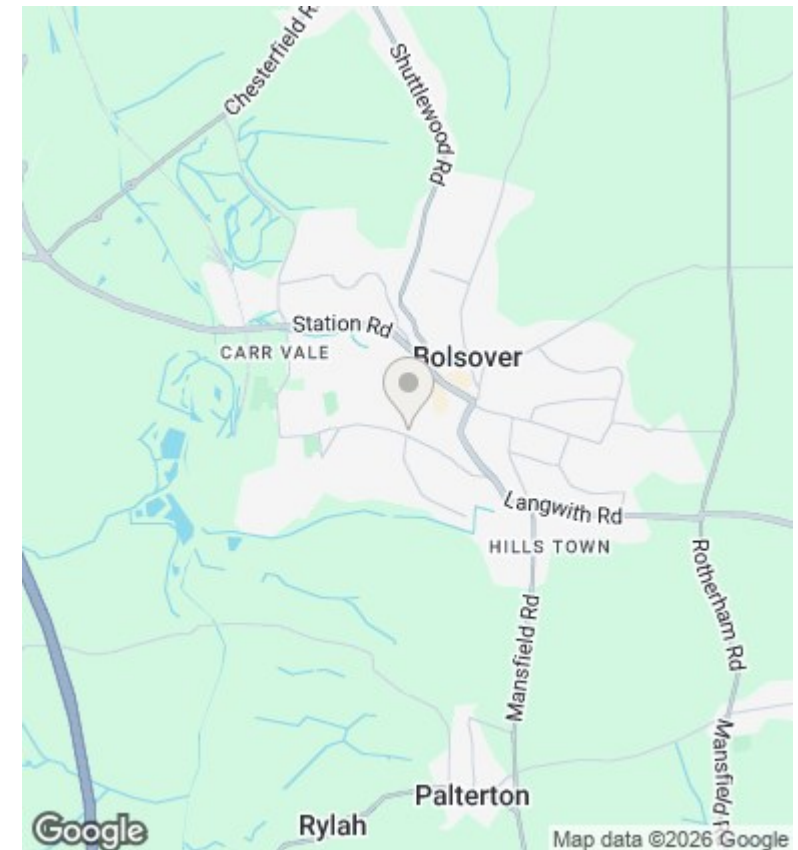
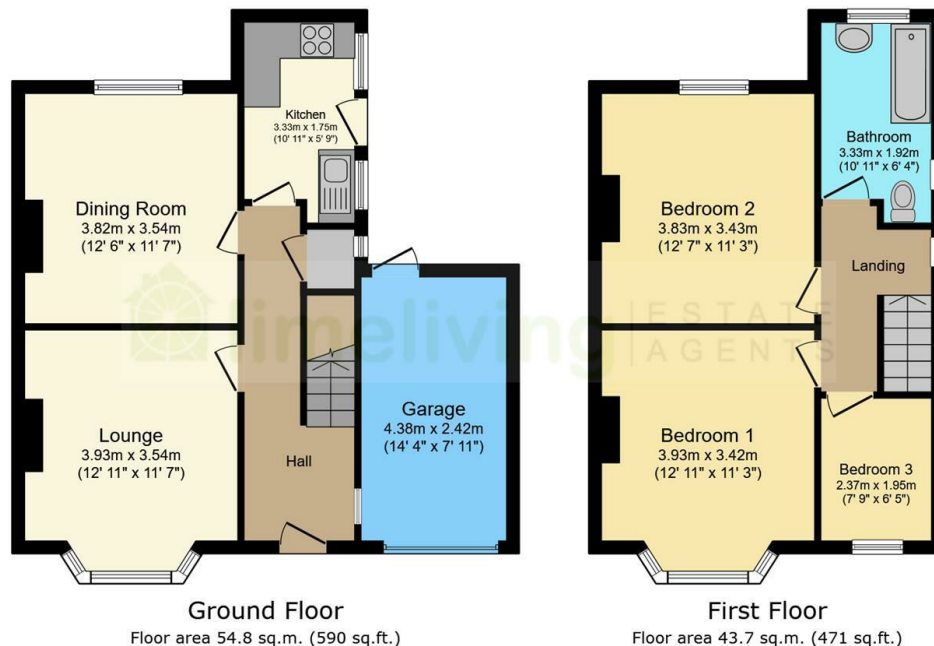




13 New Station Road, Bolsover, Chesterfield, S44 6JB

Offers Around £194,950

- Semi detached house
- Lounge
- Three bedrooms
- NO Chain!
- Convenient location
- Dining room
- Bathroom
- Well presented throughout
- Fitted kitchen
- Gardens, drive way & garage



Directions

Viewings

Viewings by arrangement only. Call 01246 275 559 to make an appointment.

Council Tax Band

A

EPC Rating:

D

Energy Efficiency Rating		
	Current	Potential
Very energy efficient - lower running costs		
(92 plus) A		
(81-91) B		
(69-80) C		
(55-68) D	64	76
(39-54) E		
(21-38) F		
(1-20) G		
Not energy efficient - higher running costs		
England & Wales	EU Directive 2002/91/EC	